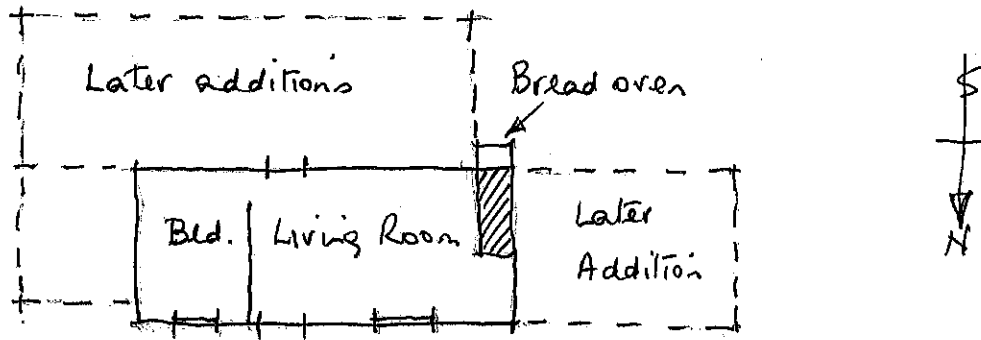


Summary by Caroline Martin - Albury History Society - [alburyhistory.org.uk](http://alburyhistory.org.uk)



A 2-room cottages (? or 3 parters) cottage, single storey, early 19c. of stone. Added second storey and lean-to, with 20c. additions.

Skews from excavations used in horse - the best and larger ones used outside, smaller ones inside. Door jambs + top of chimney rounded. Galleries in original part. 1st floor stonework better quality. Pine up hill at back. When 1st floor added stairs ran S-N, but when S. wing built the stairs were reversed. Roof gabled, rafters = halved pine, ceiling joists couple the rafters.

1809 agreement between Rev. Samuel Tlen Goddshall (Lord of the Manor of Weston Gunshelve in Albury) and William Arrow, labourer, allowing him to finish building his house & to fence the land, at a rent of 6d a year - with 99 yr. lease on 1/4 acre plot. Rev. Goddshall to have first refusal in any sale, & cottage returned to landowner at end of lease. Cottage left to widow, Elizabeth.

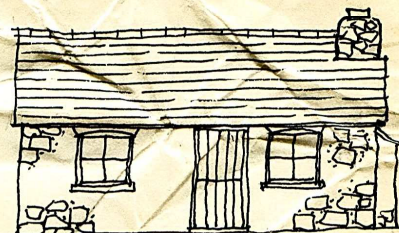
1865 Elizabeth Arrow's inventory: " - leasehold cottage - 2 rooms ... small shed adjoining, 49 rods garden ... 46 years of lease to run ... old 8-day clock ... a square deal table ... Tier of 3 shelves ... and a fat hog".





## WEST CHART

### The story of a search



West Chart is an isolated cottage in the Hurtwood between Farley Green and Shere, stone built, 2 up and 2 down, with some later additions. From the appearance of the stonework it looked as though it had originally been a single storey cottage, and so the roof gave us no clue as to its date, although Joan suggested late 18C or early 19C. It was known to have been a cottage belonging to Lockhurst Hatch Farm on the Bray Estate at one time, and that, apart from a Victorian grate upstairs, was virtually all that we had to go on. However Mrs. Corke, at the Guildford Muniment Room, was very helpful: that part of the Hurtwood was known as the West Chert, and she found a map which showed the N.W. corner of the West Chert with the track dividing as it does today, just at the site of the house. Another document, dated 1809, was an agreement between the Rev. Samuel Man Godschall, Lord of the Manor of Weston Gumshelve in Albury, and a Labourer, William Arrow, granting the latter a 99 year lease on 40 rods (1/2 acre) of land, and allowing him to finish building his house and fencing his plot (did he start without permission?) at a rent of 6d. a year, on condition that the Rev. Godschall had first refusal in any sale, and also that, if not sold, the cottage should be maintained, not pulled down, and be returned to the Landowner at the end of the lease "without any fuss". When William Arrow died he left the cottage to his wife Elizabeth, and in the meantime the Manor passed into the Bray family.

When Elizabeth Arrow died in 1865 she had appointed as her executor Edward Bray, reputedly the "black sheep of the family". He sold the cottage for £45 to George Harding and Reginald Augustus Warren, and so it came to be directly owned by the Brays. Elizabeth Arrow's Inventory reads: "A Leasehold Cottage containing two Rooms with a small Shed adjoining and about 49 rods of Garden Ground, 46 years of which are unexpired, an old 8-day clock in painted Case, a square deal Table, a tier of three Shelves and a fat Hog, the property of the late Mrs. Arrow, Lockhurst Hatch. Valued at £68.14.6d." 18 Jan. 1865. Thos. Whitbourne, who charged £1.14.4d. for his valuation. Henry Arrow ~~took~~ the furniture, linen etc. valued at £23.14.6d.

Some twenty five years ago the Bray Estates sold Lockhurst Hatch Farm, together with West Chart, one of its farm cottages, to Mr. and Mrs. Joad, and about five years ago Mrs. Joad sold this house to its present owner.

Caroline M. Martin

Oct. 1982